



TPMS SOLUTION

TIRE PRESSURE SENSOR ADAPTERS

1225 N. KNOLLWOOD CIR

ANAHEIM, CA 92801

TEL 714-484-1070

FAX 714-242-9071

TPMS Solution is proud to announce three new innovation tire pressure monitoring system sensor mounting solution options for use with most aftermarket wheels. With three different types of pressure mounting solutions, we ensure you will be able to retain your factory TPMS capability with no error codes when using aftermarket wheels on your vehicle.



1. **Bracket System for most 2 piece or 3 piece imported wheels.**

TPMS Solution #1



2. **90 degree valve stem for most USA manufactured 3 piece wheels.**

TPMS Solution #2



3. **Straight valve stem with TPMS mounting solution for most USA manufactured 2 piece wheels.**

TPMS Solution #3



4. **If you are using TPMS Solution #1 or #2, obtain the correct size allen wrench and remove the nut from the valve stem on the outer portion of the wheel.**

TPMS Solution #1 continue to step 5

TPMS Solution #2 skip to step 9

TPMS Solution #3 skip to step 15



TPMS SOLUTION

TIRE PRESSURE SENSOR ADAPTERS

1225 N. KNOLLWOOD CIR

ANAHEIM, CA 92801

TEL 714-484-1070

FAX 714-242-9071

TPMS Solution is proud to announce three new innovation tire pressure monitoring system sensor mounting solution options for use with most aftermarket wheels. With three different types of pressure mounting solutions, we ensure you will be able to retain your factory TPMS capability with no error codes when using aftermarket wheels on your vehicle.



5. After removing the nut, separate the rubber grommet from the washer. If your nut assembly does not have the rubber grommet bypass this step.



6. Put the threaded part of the nut through the bracket system with angled part of the bracket facing up.



7. Replace the rubber grommet on the underside of the metal bracket.



8. Tighten the nut with the new bracket assembly back onto the outer of the wheel.



TPMS SOLUTION

TIRE PRESSURE SENSOR ADAPTERS

1225 N. KNOLLWOOD CIR

ANAHEIM, CA 92801

TEL 714-484-1070

FAX 714-242-9071

TPMS Solution is proud to announce three new innovation tire pressure monitoring system sensor mounting solution options for use with most aftermarket wheels. With three different types of pressure mounting solutions, we ensure you will be able to retain your factory TPMS capability with no error codes when using aftermarket wheels on your vehicle.



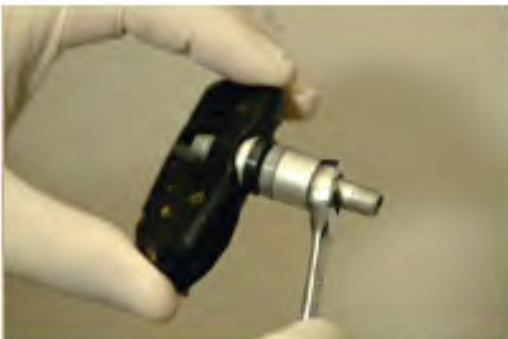
9. After removing the nut, thread the new TPMS Solution mounting hoop through the outer wheel barrel into the 90 degree valve stem.



10. Thread the adapter into the valve stem until the rubber grommet on the bottom of the TPMS Solution mounting hoop makes a tight seal with the outer wheel barrel.



11. This is how the mounting hoop should look after installation. The opening can face either perpendicular with the wheel face or parallel with the wheel face. Please choose the option that allows the best clearance for the tire to mount over the sensor.



12. Use a wrench to remove the metal sleeve from your stock TPMS sensor.



TPMS SOLUTION

TIRE PRESSURE SENSOR ADAPTERS

1225 N. KNOLLWOOD CIR

ANAHEIM, CA 92801

TEL 714-484-1070

FAX 714-242-9071

TPMS Solution is proud to announce three new innovation tire pressure monitoring system sensor mounting solution options for use with most aftermarket wheels. With three different types of pressure mounting solutions, we ensure you will be able to retain your factory TPMS capability with no error codes when using aftermarket wheels on your vehicle.



13. Insert the stock TPMS sensor through the metal ring of the TPMS Solution mounting hoop.



14. Tighten the metal sleeve with a wrench to fully secure the stock TPMS sensor to the TPMS Solution mounting hoop.

Your finished now repeat 3 more times on your other wheels. Enjoy your car with no more annoying low tire pressure warning lights.



15. Twist apart the valve stem and the TPMS Solution mounting hoop.



16. Insert the valve stem portion through the front of the valve stem hole.



TPMS SOLUTION

TIRE PRESSURE SENSOR ADAPTERS

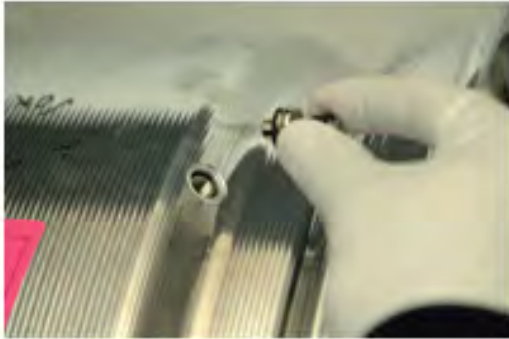
1225 N. KNOLLWOOD CIR

ANAHEIM, CA 92801

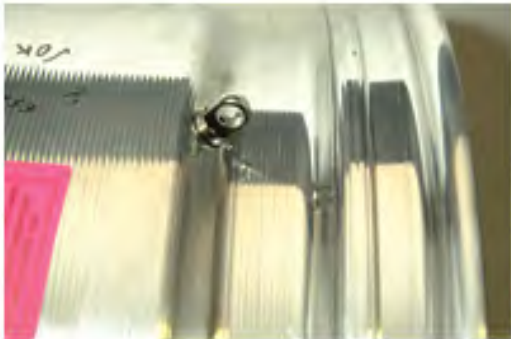
TEL 714-484-1070

FAX 714-242-9071

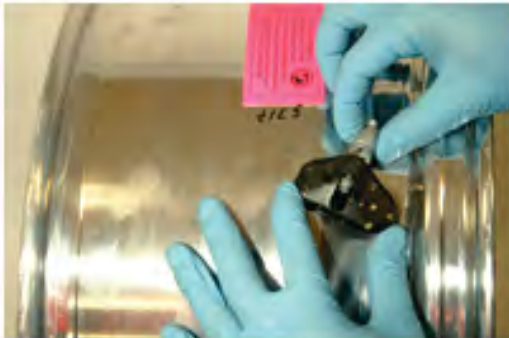
TPMS Solution is proud to announce three new innovation tire pressure monitoring system sensor mounting solution options for use with most aftermarket wheels. With three different types of pressure mounting solutions, we ensure you will be able to retain your factory TPMS capability with no error codes when using aftermarket wheels on your vehicle.



17. **Insert the TPMS Solution mounting hoop through the back of the valve stem hole and thread it against the valve stem until the rubber grommet is tight against the wheel outer surface.**



18. **This is how the mounting hoop should look after installation. The opening can face either perpendicular with the wheel face or parallel with the wheel face. Please choose the option that allows the best clearance for the tire to mount over the sensor.**



19. **Insert the stock TPMS sensor through the metal ring of the TPMS Solution mounting hoop. Tighten the metal sleeve with a wrench to fully secure the stock TPMS sensor to the TPMS Solution mounting hoop.**



20. **Your finished now repeat 3 more times on your other wheels. Enjoy your car with no more annoying low tire pressure warning lights.**